

Breast Cancer Overview

St. Dominic Hospital Cancer Services

Jackie Murray MSN RN OCN

Early Identification



Agenda

- Breast Health
- What is Breast Cancer?
- Breast Cancer Facts
- Breast Cancer Screening Tests
- Breast Cancer Risk Factors

Objectives:

- Increase knowledge of breast health and breast cancer
- Provide guidelines on breast cancer screening tests
- Increase knowledge of breast cancer risk factors and screening guidelines

Breast Health

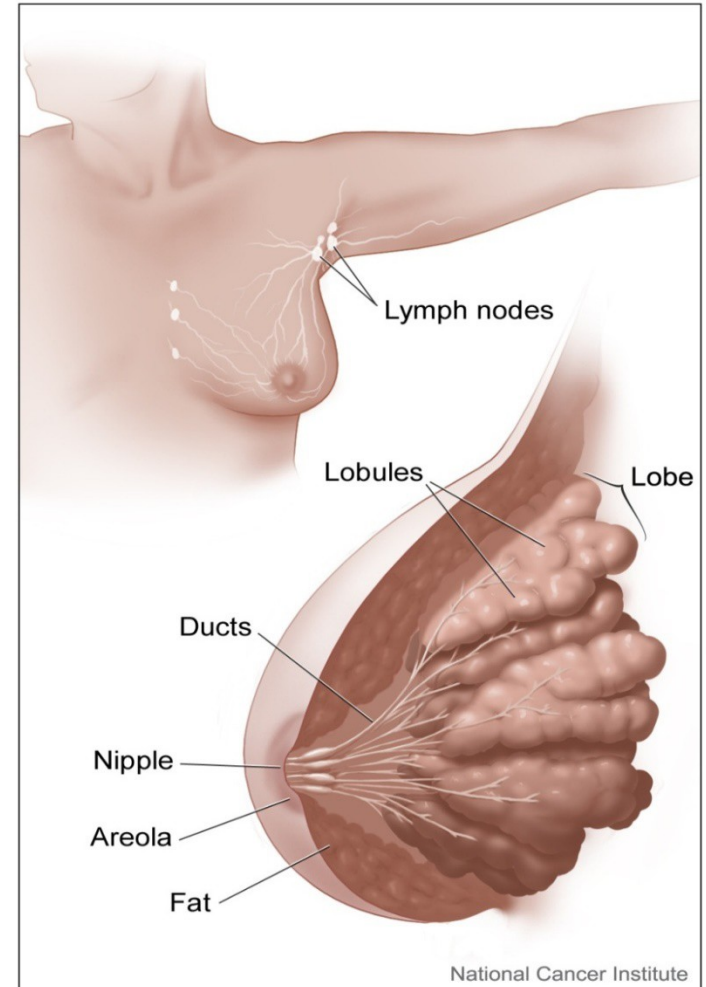
The female breast is made up of mainly:

Lobules – the milk-producing glands

Ducts – tiny tubes that carry the milk from the lobules to the nipple

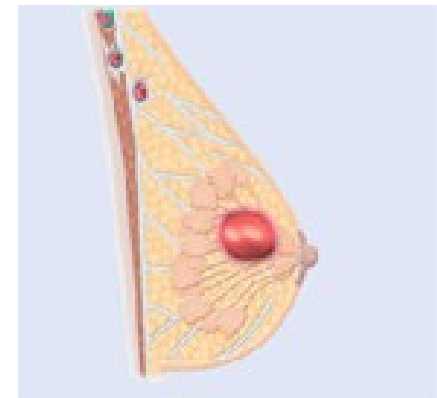
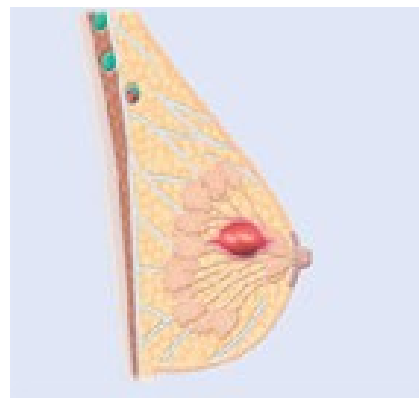
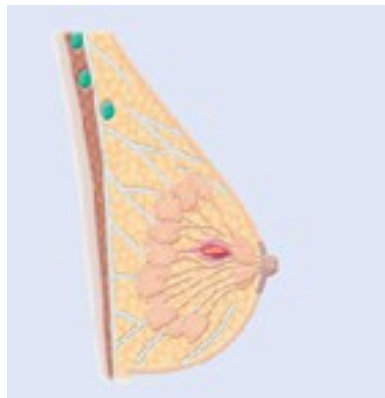
Stroma – fatty tissue and connective tissue surrounding the ducts and lobules, blood vessels, and lymphatic vessels

Lymphatic System-immune system network.



Breast Health

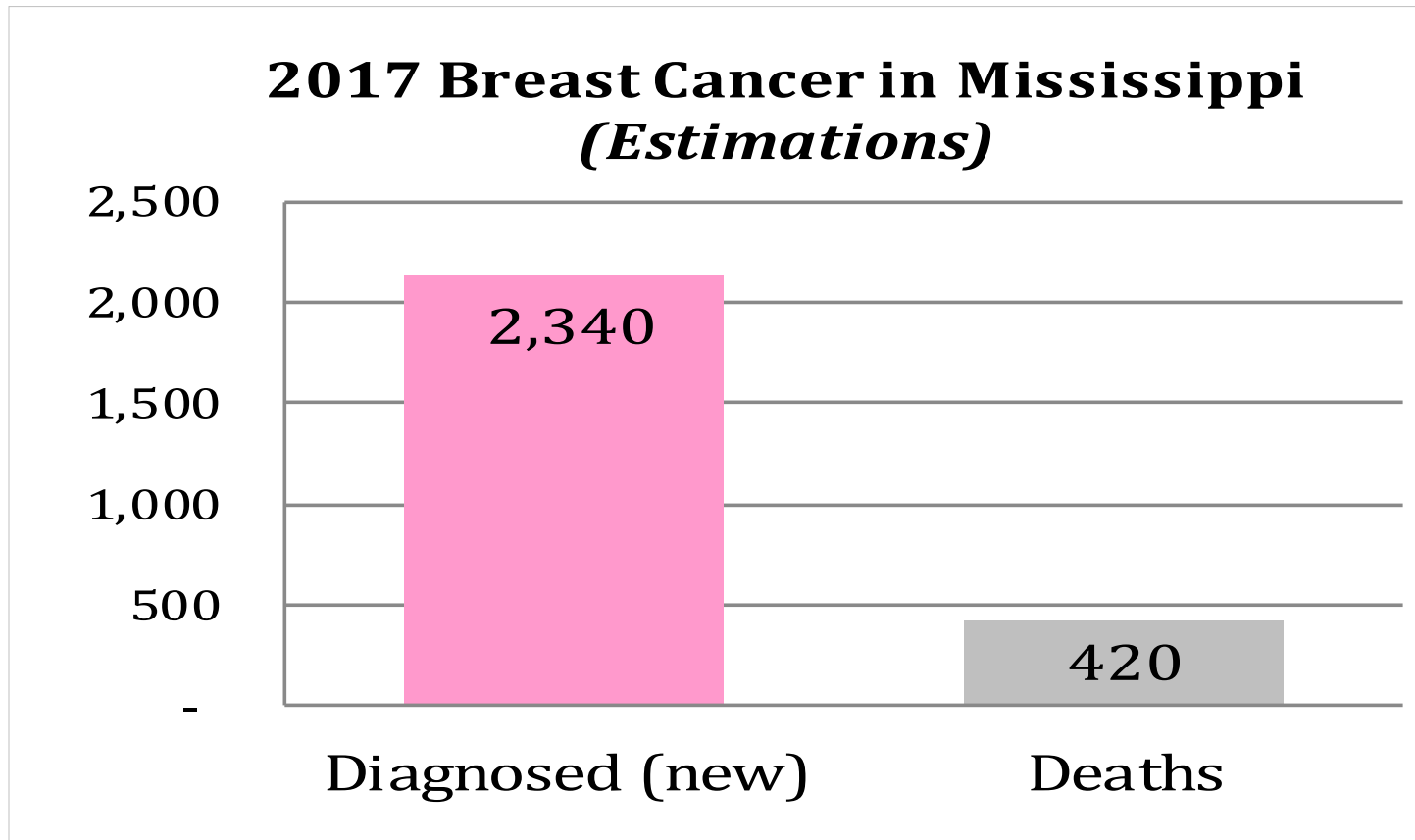
- Benign breast lumps and common findings
 - Not cancerous
 - Fibrocystic changes
 - Dense breast tissue



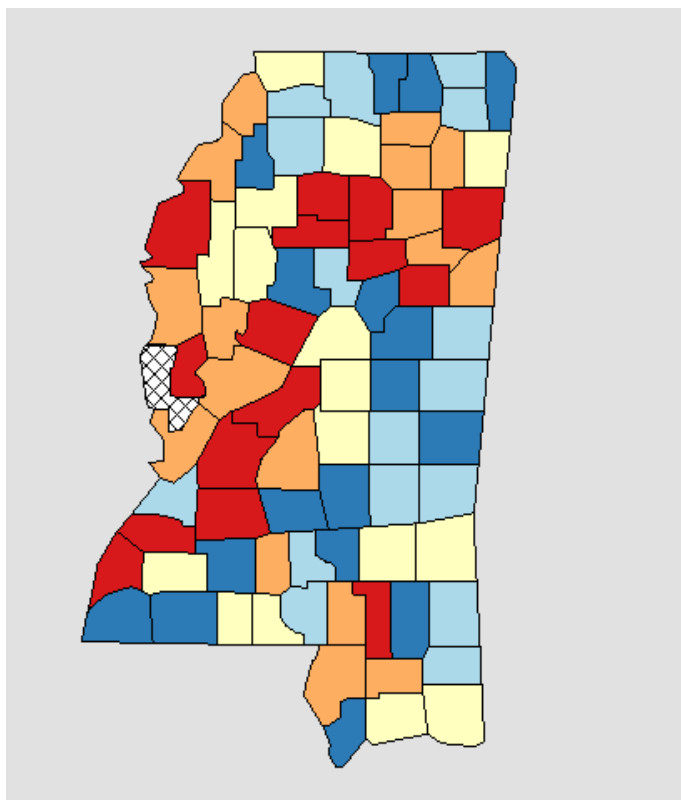
What is Breast Cancer?

- Breast cancer is a malignant (cancer) tumor that starts in cells of the breast.
- Breast cancer is found mostly in women, but men can get breast cancer, too.
- Most breast cancers begin in the ducts (ductal), some in the lobules (lobular), and the rest in other tissues.
- Cancer cells can enter lymphatic vessels and spread to lymph nodes.
- If breast cancer cells have spread to the underarm lymph nodes, they are more likely to have spread to other organs of the body as well.

Breast Cancer Facts



Breast Cancer Facts



Breast Cancer Incidence, All Races 2010-2014

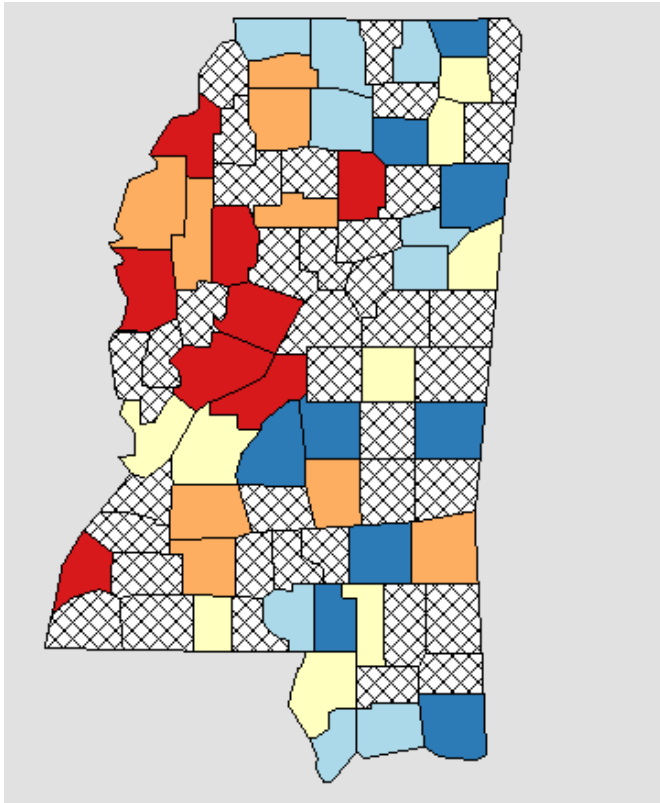
United States	Mississippi	Hinds County
123.5	115.5	125.6

Breast Cancer Incidence, By Race 2010-2014

	African American	White (Non-Hispanic)
United States	122.8	128.6
Mississippi	120.5	113.4
Hinds County	125.4	129.4

Source: SEER, Mississippi Cancer Registry

Breast Cancer Facts



Breast Cancer Mortality, All Races 2010-2014

United States	Mississippi	Hinds County
21.2	23.9	25.7

Breast Cancer Mortality, By Race 2010-2014

	African American	White (Non-Hispanic)
United States	29.2	21.2
Mississippi	32.5	19.9
Hinds County	32.0	15.8

Source: SEER, Mississippi Cancer Registry

Breast Cancer Facts

- African American Women
 - Have higher breast cancer death rate than non-Hispanic white women
 - Lack of health care, insurance, or follow-up are thought to be issues
 - Distrust of health care system
- Early Detection
 - Find cancers early
 - Size of breast cancer predicts prognosis

Breast Cancer Screening Tests

- Self Breast Exam and Clinical Breast Exam
- Starting at age 40, all women at average risk should talk to their doctor about the mammogram plan that's best for them.
- If women are at increased risk due to a family or personal history, they should talk to their doctor about their history.

Breast Cancer Risk Factors

Anything that increases a woman's chance of getting a disease is called a risk factor.

Age	Breast density
Personal history of breast cancer	DES
Family history of breast cancer	Reproductive history
Certain breast changes	Hormone use
Genetic alterations	Obesity after menopause
Menstrual history	Physical inactivity
Radiation therapy to the chest	Alcohol use

